

## Connector - C-SCFI 1,5/6,3X0,8 - 3240052

Please be informed that the data shown in this PDF Document is generated from our Online Catalog. Please find the complete data in the user's documentation. Our General Terms of Use for Downloads are valid (<http://phoenixcontact.com/download>)




Slip-on sleeve, red, 0.5 ... 1.5 mm<sup>2</sup>, 6.3 x 0.8

### Your advantages

- Electrolytic tin plating
- Hard-soldered crimping zone for maximum pull-out forces
- Halogen-free
- 'EASY ENTRY' for easy and reliable conductor entry



### Key Commercial Data

Packing unit	1 pc
Minimum order quantity	100 pc
GTIN	 4 046356 452700
GTIN	4046356452700
Weight per Piece (excluding packing)	1.000 g
Custom tariff number	85366990
Country of origin	China

### Technical data

#### Dimensions

Length (b)	21.5 mm
Width (a)	6.3 mm
Maximum stripping length	7 mm
Length of insulation sleeve (c)	10.5 mm

## Connector - C-SCFI 1,5/6,3X0,8 - 3240052

### Technical data

#### Dimensions

Inner dimension of the insulating collar (d)	4.1 mm
Material thickness (g)	0.4 mm

#### Ambient conditions

Ambient temperature (operation)	-20 °C ... 105 °C
---------------------------------	-------------------

#### General

Color	red
Stripping length	7 mm
Components	halogen-free
Material	Brass
Insulating material	PA
Coating	tin-plated

#### Standards and Regulations

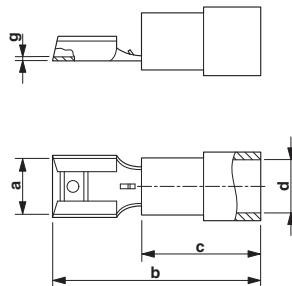
Flammability rating according to UL 94	V2
--	----

#### Environmental Product Compliance

China RoHS	Environmentally friendly use period: unlimited = EFUP-e
	No hazardous substances above threshold values

### Drawings

Dimensional drawing



### Classifications

eCl@ss

eCl@ss 10.0.1	27400204
eCl@ss 11.0	27400204
eCl@ss 4.0	27060700
eCl@ss 4.1	27060700

## Connector - C-SCFI 1,5/6,3X0,8 - 3240052

### Classifications

#### eCl@ss

eCl@ss 5.0	27400200
eCl@ss 5.1	27400200
eCl@ss 6.0	27400200
eCl@ss 7.0	27400204
eCl@ss 9.0	27400204

#### ETIM

ETIM 2.0	EC000005
ETIM 3.0	EC000005
ETIM 4.0	EC001052
ETIM 6.0	EC001052
ETIM 7.0	EC001052

#### UNSPSC

UNSPSC 6.01	30211923
UNSPSC 7.0901	27121703
UNSPSC 11	27121703
UNSPSC 12.01	27121703
UNSPSC 13.2	27121707
UNSPSC 18.0	27121707
UNSPSC 19.0	27121707
UNSPSC 20.0	27121707
UNSPSC 21.0	27121707

### Accessories

#### Accessories

##### Crimping tool

Crimping pliers - CRIMPFOX-RCI 2,5 - 1212053



Crimping pliers, for insulated cable lugs, 0.5 mm<sup>2</sup> ... 2.5 mm<sup>2</sup> (red, blue), oval crimp

## Connector - C-SCFI 1,5/6,3X0,8 - 3240052

### Accessories

Crimping pliers - CRIMPFOX-RCI 2,5-M - 1212728



Crimping pliers, compact pliers, for insulated cable lugs (red, blue), two marked die stations, unlockable pressure lock, lateral entry

---

Crimping pliers - CRIMPFOX-RCI 6 - 1212057



Crimping pliers, for insulated cable lugs, 0.5 mm<sup>2</sup> ... 6.0 mm<sup>2</sup> (red, blue, yellow), oval crimp, symmetrical

---

Crimping pliers - CRIMPFOX-RCI 6-1 - 1212059



Crimping pliers, for insulated cable lugs, 0.5 mm<sup>2</sup> ... 6.0 mm<sup>2</sup> (red, blue, yellow), oval crimp, asymmetrical

---

Crimping pliers - CRIMPFOX-RCI 6-M - 1212730



Crimping pliers, compact pliers, for symmetrical insulated cable lugs, 0.5 mm<sup>2</sup> ... 6.0 mm<sup>2</sup> (red, blue, yellow), three marked die stations, unlockable pressure lock, lateral entry

---

### Die

Replacement die - CF 500/DIE RCI 1,5 - 1212263



Die for crimping machine CF 500, for insulated cable lugs (C-RCI... and C-FCI...) 0.14 ... 1.5 mm<sup>2</sup>

---

## Connector - C-SCFI 1,5/6,3X0,8 - 3240052

### Accessories

Replacement die - CF 500/DIE RCI 6 - 1212240



Die for crimping machine CF 500, for insulated cable lugs (C ... RCI... and C ... FCI...) 0.5 ... 6 mm<sup>2</sup>